



LEAF LITTER ACTIVITY SHEET



PART 1:

Look at the surrounding area.

Make notes about the natural environment using your senses:

What do you see (sight)?

What do you hear (sound)?

What do you feel (touch)?

What do you smell?



Look closely at the leaf litter:

What do you see without touching?

Now dig in - How many different creatures are there?



PART 2:

Choose a small square of leaf litter to draw. Make a list of all the things you see alive or not:

• .
• .
• .
• .
• .
• .
• .
• .
• .
• .
• .

• .
• .
• .
• .
• .
• .
• .
• .
• .
• .
• .

• .
• .
• .
• .
• .
• .
• .
• .
• .
• .
• .

Sketch with pencil - Remember to use the whole drawing space, leaving no blank spaces, paying careful attention to the background and foreground:



LEAF LITTER – WORD FIND

B L U G W P F V N X W B N S S V C K Y V
Q E P A E E E V E A A T P Z P G F M X E
Z J V I Y R D P C R I X R G V O I J H P
M P F R G N M Y K V A R O V F Y R W W W
T Y G A M P G I E Z R E B L I O S E T P
I X C S K D B I N N C B O S O H G A S D
I B D R L R I O V A O Y S P T S R U B N
S S P U K Q I S G Q T H C A U R Y U O Y
L W W B N K E R G V A E I B B E V S M N
S P D T N O O C O C Y C S H E W L C G P
D S R E H T A E F X P C P S R O Y S O J
E C Z E H H W D D B E W E B O L K L A X
E U Q W R A I N W A T E R T X F L A R N
S L V S B S K F M U R A S L G E S X Z L
Y T A K E K X E B T N D Y I N R O O T S
U V S V E E C J A C A X W C A T K O Y L
J U A E Q Z V L H O C T M H Q D D D T V
B E Q U N S Z E T N N M U E V N X H A Y
L Z S I Q E S L F U H I E N Q F T Q D B
K M N O A G N W F U N G U S N D E D E X

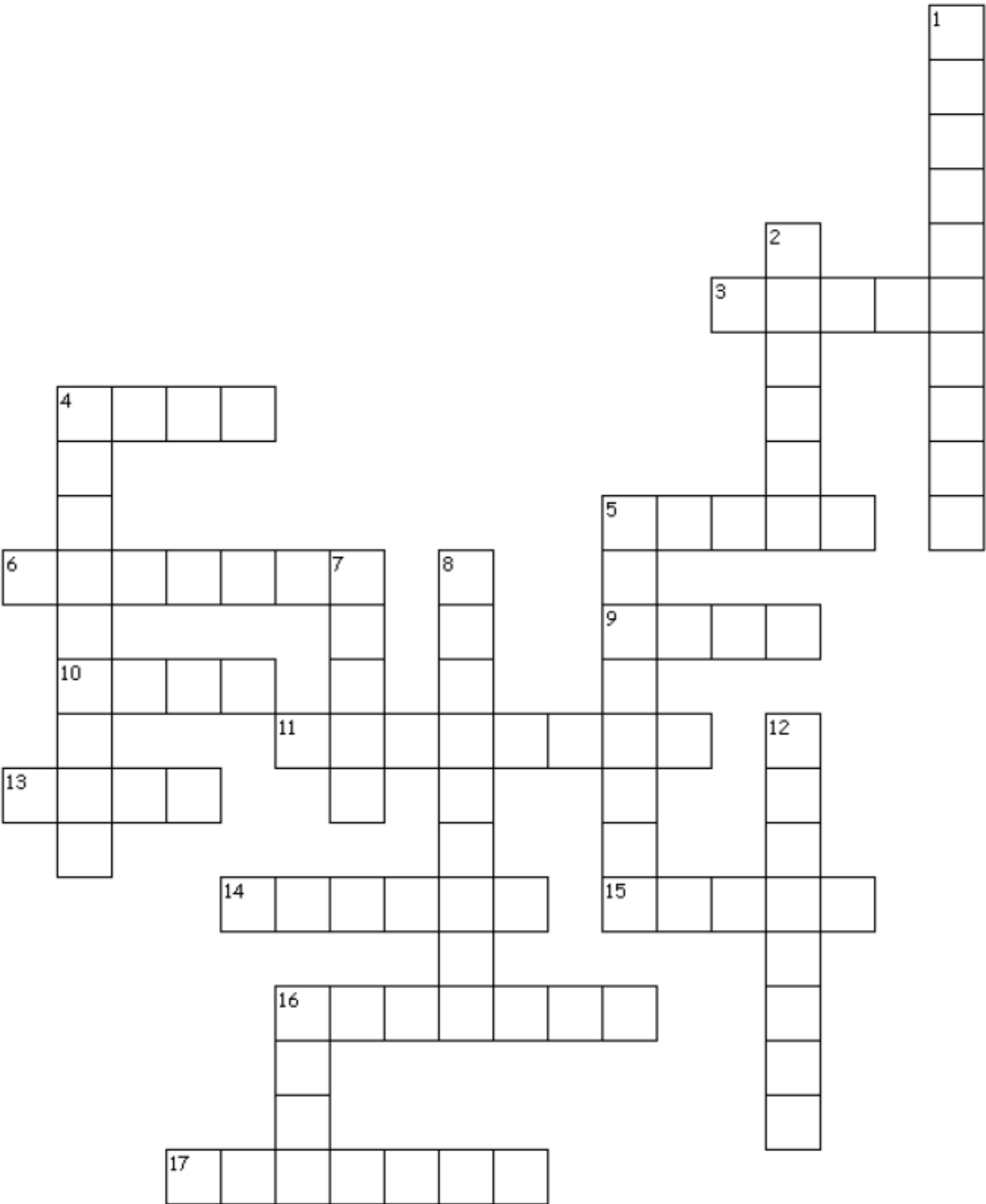
BARK
BRANCHES
COCOON
FEATHERS
FLOWERS
FUNGUS
GERMINATE
TREES
TUBER
TWIGGS

HAKEA
HONEYDEW
LEAVES
LICHEN
NEST
POLLEN
PROBOSCIS

RAINWATER
ROOTS
SEEDS
SOIL
SPORES
SWEET BURSARIA
TOADSTOOLS



LEAF LITTER CROSSWORD



Crossword Clues

Across

3. A winged male or female termite, ant or other insect that flies from the nest to mate and start a new colony.
4. A creature that is hunted and eaten by another creature.
5. The tiny reproductive cell of a fungus, moss or fern.
6. The tail area of insects and spiders.
9. The larva of some insects, including beetles.
10. A creature related to the snail, but with a simpler shell, or none at all.
11. A grub that spits out eucalyptus-smelling oil to defend itself against enemies.
13. A plate underneath the cap of a mushroom or similar fungus that holds spores.
14. A fly larva.
15. A swollen root or stem in many plants, usually underground that is used for food storage.
16. A pale, soft-bodied insect that feeds on cellulose.
17. A pair of claws on the heads and front legs of creatures such as centipedes, millipedes and earwigs.

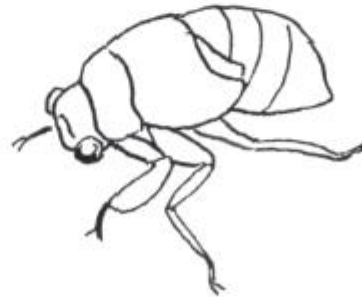
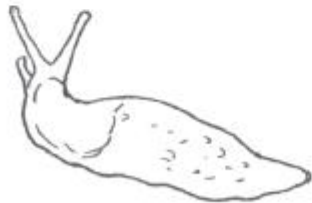
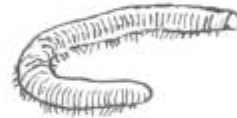
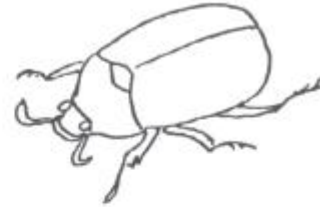
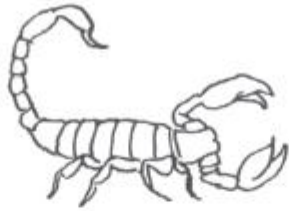


Down

1. A dark-coloured warty frog that gets its name from the noise it makes when it croaks.
2. A tiny crustacean that lives in soil, also called a woodlouse.
4. The long, tube-like 'mouth' of some insects and worms.
5. The most common type of ant in the world.
7. The larva of an insect that doesn't pupate.
8. A worm that eats soil and everything in it.
12. A sticky, sugary liquid produced by some insects as they feed on plants and suck their sap.
16. A grey-coloured marsupial about the size of a rat, with a black, bottlebrush-shaped tail.



WRITE THE CORRECT NAME BENEATH EACH PICTURE



BABIES

Many creatures that live in the leaf litter have babies that don't look anything like their parents. See if you can work out which baby belongs to which adult? Draw a line to connect them

