

FOOD WEB GAME

INTRODUCTION

The aim of this activity is to teach the students about the food web. In very basic terms:

- Primary → plants
- Secondary → insects
- Tertiary → animals
- Essential – → sun and water
- Consumers (top of food chain) → humans, fishermen, hunters, farmers, us.

The sun and water are important/ essential for all organisms. Humans depend on everything for the food chain to not break.

WATER BASED THEME - images

- Sun
- water
- algae
- water plants
- snags
- macro-invertebrates
- fish
- water birds
- micro invertebrates
- Animals - platypus/ water rat
- Human
- Fisherman

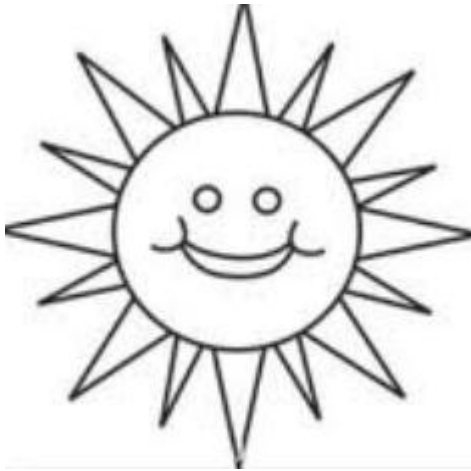
LAND BASED THEME- images

- Sun
- water
- fungi
- plants
- trees
- insects
- macro-invertebrates
- birds
- Animals
- Human
- Hunter

INSTRUCTIONS

- Choose a theme - Water or land
- Hand out lanyards with pictures from the above lists
- Have the students with the pictures stand in a row in front of the rest of the class.
- Assist them to arrange themselves in order of the food chain.
- Have the students hold hands / link arms like a chain
- Break links and discuss the implications

SUN



WATER



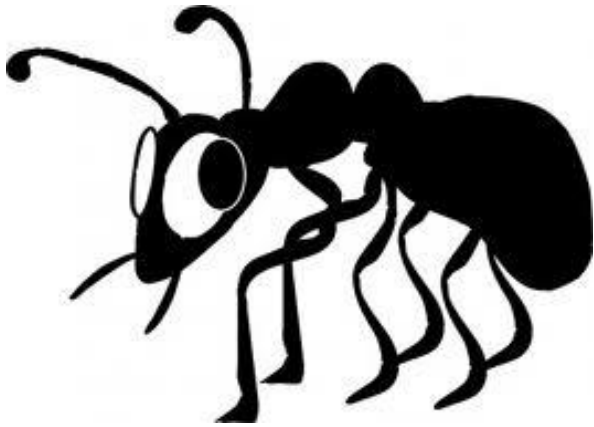
HUMAN



Fisherman



INSECTS



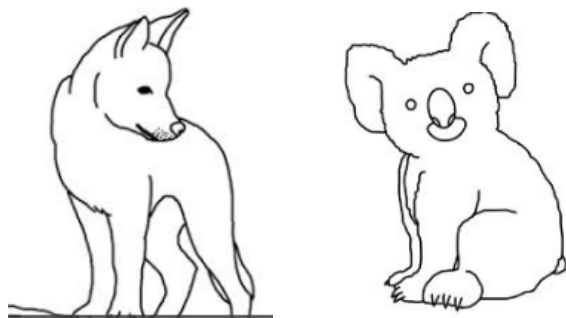
TREES



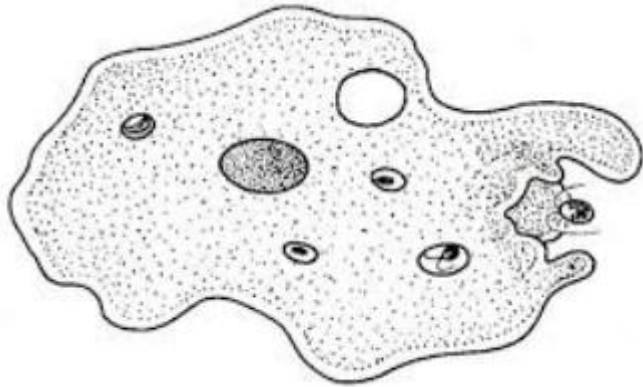
PLANTS



ANIMALS



ALGAE



WATER PLANTS



WATER BUGS / MACRO INVERTEBRATES



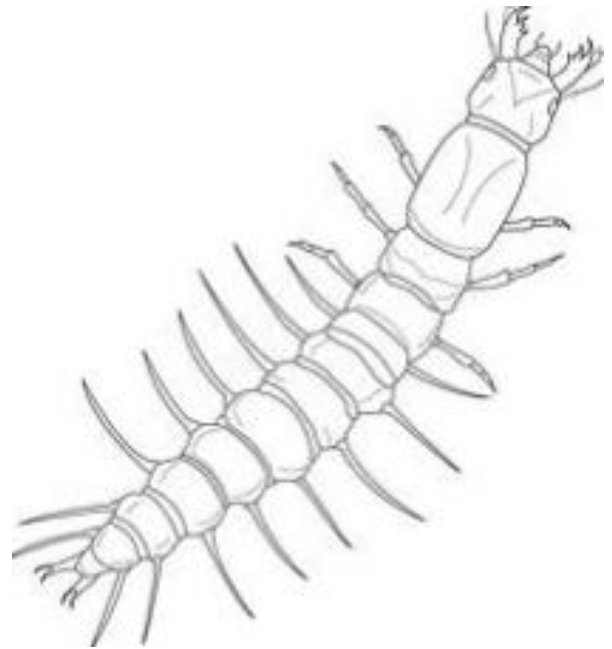
WATER BIRDS



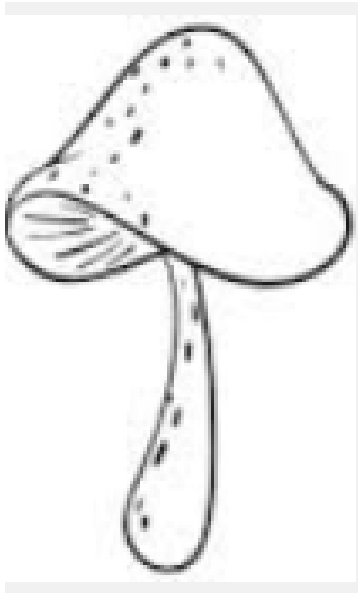
BIRD



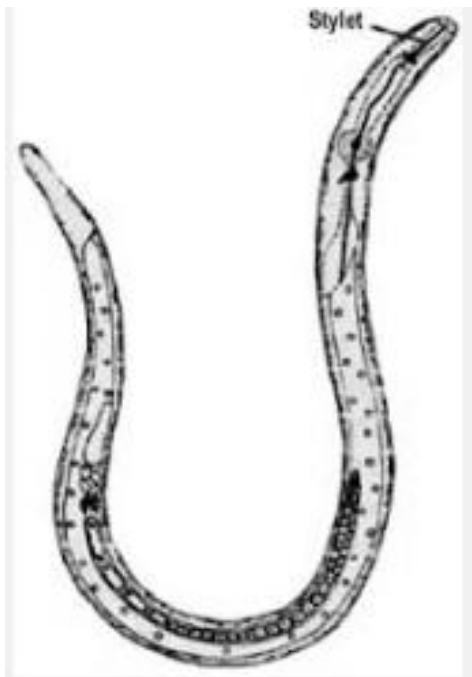
MACRO-INVERTEBRATES



FUNGI



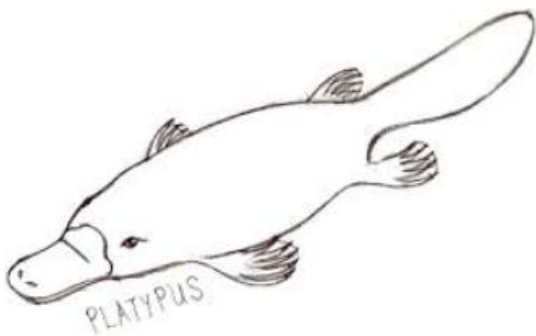
MICRO INVERTEBRATES



SNAGS



WATER ANIMALS



FISH

